

SPECIFICATIONS INFORMATION

Spec Sheets for Roller Shades	02
FR Certificate for Roller Shade Fabrics	03
Cut Sheet for Roller Shade Side and Sill Channel	06
Installation	
Shade Installation.....	07
Side Sill Channel Installation	09
Fascia Installation	11
Roller Shades Care and Cleaning Instructions	12
Roller Shades Colors and Specifications	13
Warranty.....	14

BLACKOUT ROLLER SHADES ARE PERFECT FOR:

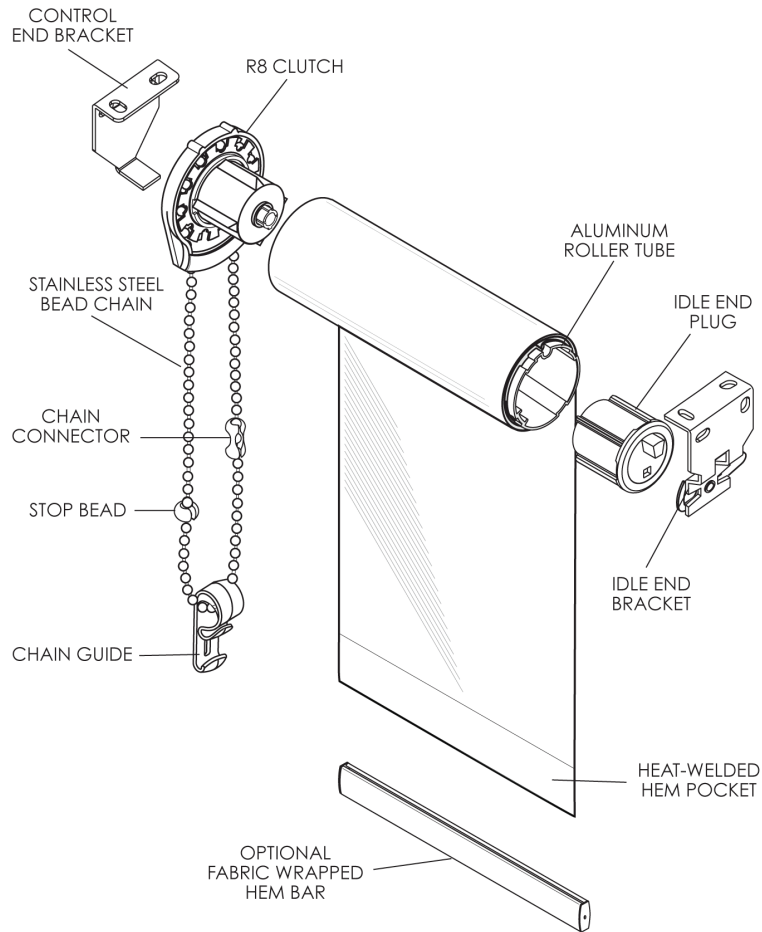
- Laser labs
- Photo labs
- Security rooms
- Post offices
- Hospitals
- Clinics
- Prisons
- Universities
- Photographers
- Government agencies
- Airport security
- University labs
- Science labs
- Test labs
- Sleep study labs
- Detention facilities

...and many more!

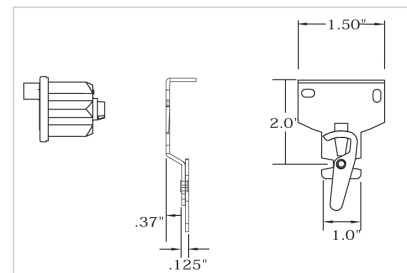
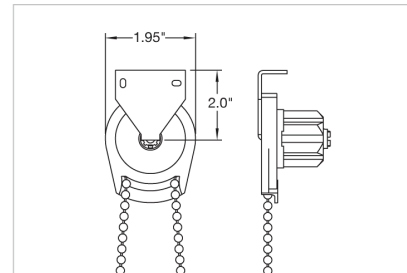
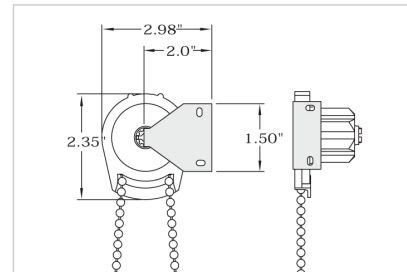
Call **1-866-BLACKOUT** and we can provide you with blackout curtains, track and hardware and roller shades to control your lighting applications.

SPECIFICATIONS FOR ROLLER SHADES

MANUFACTURER: www.blackoutcurtains.com
676 Mendelssohn Ave N
Golden Valley, MN 55427
866.252.2568



Component Dimensions



- **R8 clutch system is designed to lift shades weighing up to eight pounds.**
- **Shades are raised and lowered by means of a #10 stainless steel bead chain.**
- **Roller tube is extruded aluminum engineered with a channel to accept fabric spline making the shade panel easy to remove.**
- **Hem bar is extruded aluminum and completely enclosed in a heat-welded hem pocket.**
Optional fabric wrapped hem bar.
- **Edge gap is 9/16" on the clutch end and 9/16" on the idler end.**

Call **1-866-BLACKOUT** and we can provide you with blackout curtains, track and hardware and roller shades to control your lighting applications.

ROLLER SHADE FIRE RATING



CLIENT: Indiana Coated Fabrics Inc.
Rte. 15 Poor Dr. POB 1017
Warsaw Kosciusko, IN 46581

Attn: William Haney

Test Report No: 606313

Date: May 8, 2006

SAMPLE SUBMITTED BY CLIENT AS: One (1) Sample: 12 Oz. Opaque/Duplex

DATE OF RECEIPT: May 3, 2006

TESTING PERIOD: May 6, 2006

TEST REQUESTED: NFPA 701 Test Method 1 – 2004 Edition

TEST RESULTS: Please refer to the following page.

PREPARED BY:

M. Szklarski
Mariusz Szklarski
Technician - Flammability
Textile Laboratory

**SIGNED FOR AND ON BEHALF OF
SGS U.S. TESTING COMPANY, INC.**

Greg S. Kolbeck
Greg S. Kolbeck
Manager
Textile Laboratory

Page 1 of 2

ms

This report is issued by SGS U.S. Testing Company Inc. under its General Conditions for Testing Services, as printed on reverse side. SGS U.S. Testing's responsibility under this report is limited to proven negligence and will in no case be more than the amount of the testing fees. Except by special arrangement, samples are not retained by SGS U.S. Testing for more than 30 days. The results shown on this test report refer only to the sample(s) tested unless otherwise stated, under the conditions agreed upon. Anyone relying on this report should understand all of the details of the engagement. Neither the name, seals, marks nor insignia of SGS U.S. Testing may be used in any advertising or promotional materials without the prior written approval of SGS U.S. Testing. The test report cannot be reproduced, except in full, without prior written permission of SGS U.S. Testing Company Inc.

SGS U.S. Testing Company Inc. | Consumer Testing Services 291 Fairfield Avenue, Fairfield, NJ 07004 t (973) 575-5252 f (973) 575-7175 www.sgs.com

Call **1-866-BLACKOUT** and we can provide you with blackout curtains, track
and hardware and roller shades to control your lighting applications.

blackout curtains  **com**

ROLLER SHADE FIRE RATING



Report No.: 606313

Date: 5/08/06

Page: 2 of 2

CLIENT: Indiana Coated Fabrics

RESULTS:

Flame Propagation of Textiles and Films

NFPA 701 Test Method 1-2004 Edition

Specimen	Original wt. (grams)	Post wt. (grams)	After Flame (seconds)	Residues (seconds)	Wt. Loss (percent)
1	29.2	26.8	0.0	0.0	8.2
2	29.5	26.7	0.0	0.0	9.5
3	29.5	26.2	0.0	0.0	11.2
4	29.4	26.4	0.0	0.0	10.2
5	29.3	26.5	0.0	0.0	9.6
6	29.8	26.4	0.0	0.0	11.4
7	29.7	26.9	0.0	0.0	9.4
8	29.9	27.3	0.0	0.0	8.7
9	30.0	27.4	0.0	0.0	8.7
10	30.0	27.2	0.0	0.0	9.3
			AVG	0.0	9.6
			3*STDEV		3.1
			AVG + 3STDEV		12.8

Requirements:

Fragments or residues of specimens that fall to the floor of the test chamber shall not continue to burn for more than an average of 2 seconds per specimen for the sample of 10 specimens. The average weight loss of the 10 specimens in a sample shall be 40% or less. No individual specimen's mass loss percent shall deviate more than 3 standard deviations from the mean for the 10 specimens.

CONCLUSION:

The submitted sample meets the requirements of NFPA 701 Test Method 1-2004 Edition, when tested in its original state.

End of Report

Call **1-866-BLACKOUT** and we can provide you with blackout curtains, track and hardware and roller shades to control your lighting applications.

blackout curtains  **com**

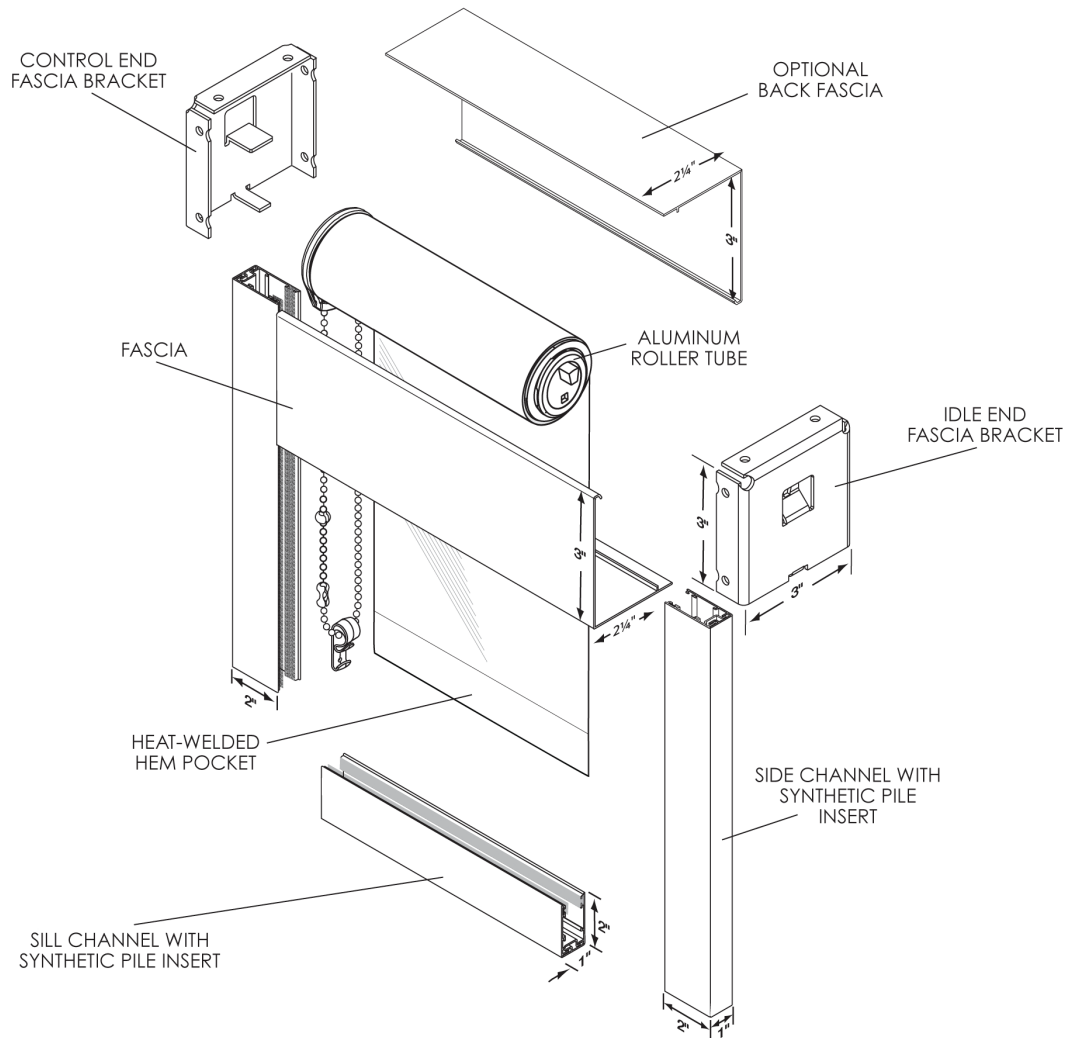
ROLLER SHADE FIRE RATING

The certification and/or test results attached hereto (the "Certifications") are the work product of the third party referenced therein (the "Provider") and do not necessarily reflect the opinions, analyses or conclusions of Springs Window Fashions, LLC or any affiliate thereof (collectively, "SWF"). By providing the Certifications, SWF does not imply an endorsement, sponsorship, or recommendation by SWF of the Provider or of the information contained in the Certifications.

SWF MAKES NO EXPRESS OR IMPLIED WARRANTIES, REPRESENTATIONS OR ENDORSEMENTS WHATSOEVER WITH RESPECT TO THE PROVIDER OR THE CERTIFICATIONS. SWF EXPRESSLY DISCLAIMS ALL WARRANTIES OF ANY KIND, EXPRESS, IMPLIED, STATUTORY OR OTHERWISE, INCLUDING, BUT NOT LIMITED TO, IMPLIED WARRANTIES OF MERCHANTABILITY AND FITNESS FOR A PARTICULAR PURPOSE, WITH REGARD TO THE CERTIFICATIONS. SWF DOES NOT WARRANT THE ACCURACY OR COMPLETENESS OF THE CERTIFICATIONS. THE CERTIFICATIONS ARE PROVIDED ON AN "AS IS" BASIS.

Call **1-866-BLACKOUT** and we can provide you with blackout curtains, track and hardware and roller shades to control your lighting applications.

ROLLER SHADE WITH SIDE AND SILL CHANNEL CUT SHEET



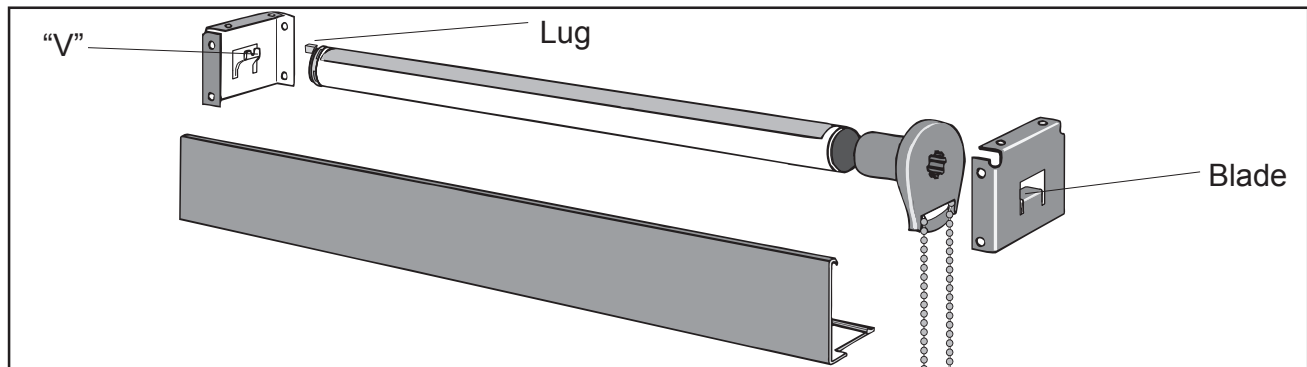
- Shades are raised and lowered by means of a #10 stainless steel bead chain.
- Roller tube is extruded aluminum engineered with a channel to accept fabric spline making the shade panel easy to remove.
- Hem bar is extruded aluminum and completely enclosed in a heat-welded hem pocket.
- Fascia measure 3" high with a 2-1/4" bottom lip and snaps onto 3"x3" fascia bracket.
Available in white, vanilla, clear anodized, bronze or black. Optional back fascia.
- Side and sill channels are 2"x1" extruded aluminum with synthetic pile inserts to eliminate light leakage. Available in white, clear anodized or bronze.

Call **1-866-BLACKOUT** and we can provide you with blackout curtains, track and hardware and roller shades to control your lighting applications.

ROLLER SHADE INSTALLATION

1. MOUNT THE BRACKETS The open end of each bracket faces downward, as shown in the drawing below.

NOTE: If you have an inside mount and must use "inside mount holes," you will have to drill your own holes in the side of the bracket. Use at least two screws per bracket, and make sure that the screw heads clear the clutch.

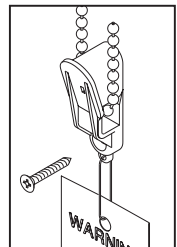


2. INSTALL THE SHADE Push the clutch straight onto the blade of its bracket. The bottom of the clutch should always point straight down, as shown above. Lower the lug of the end plug onto the "V" of its bracket. The roller should fit in the brackets securely, with just a little play.

3. ATTACH STOPS TO METAL OR PLASTIC BEAD CHAIN For plastic bead chain: use connector for top stop and attach another connector for lower stop. For metal bead chain: attach a metal stop ball at least 5/16" (8 mm) in diameter so that it touches the clutch when the shade is rolled all the way up. For both kinds of bead chain, lower the shade to sill or floor height, and snap the appropriate metal stop or plastic connector on the opposite side from the stop, so that the shade cannot be lowered beyond that point.

4. INSTALL THE TENSION DEVICE

The Tension Device reduces the hazards of strangulation and entanglement of young children by limiting access to the control cord. Anchor the Tension Device, that is attached to the shade's control cord or bead chain, to the window frame or wall, so that young children cannot pull the cord or bead chain around their necks.



a. Lower the shade.

b. Hold the Tension Device upright so the Warning Tag hangs straight down as shown in diagram.

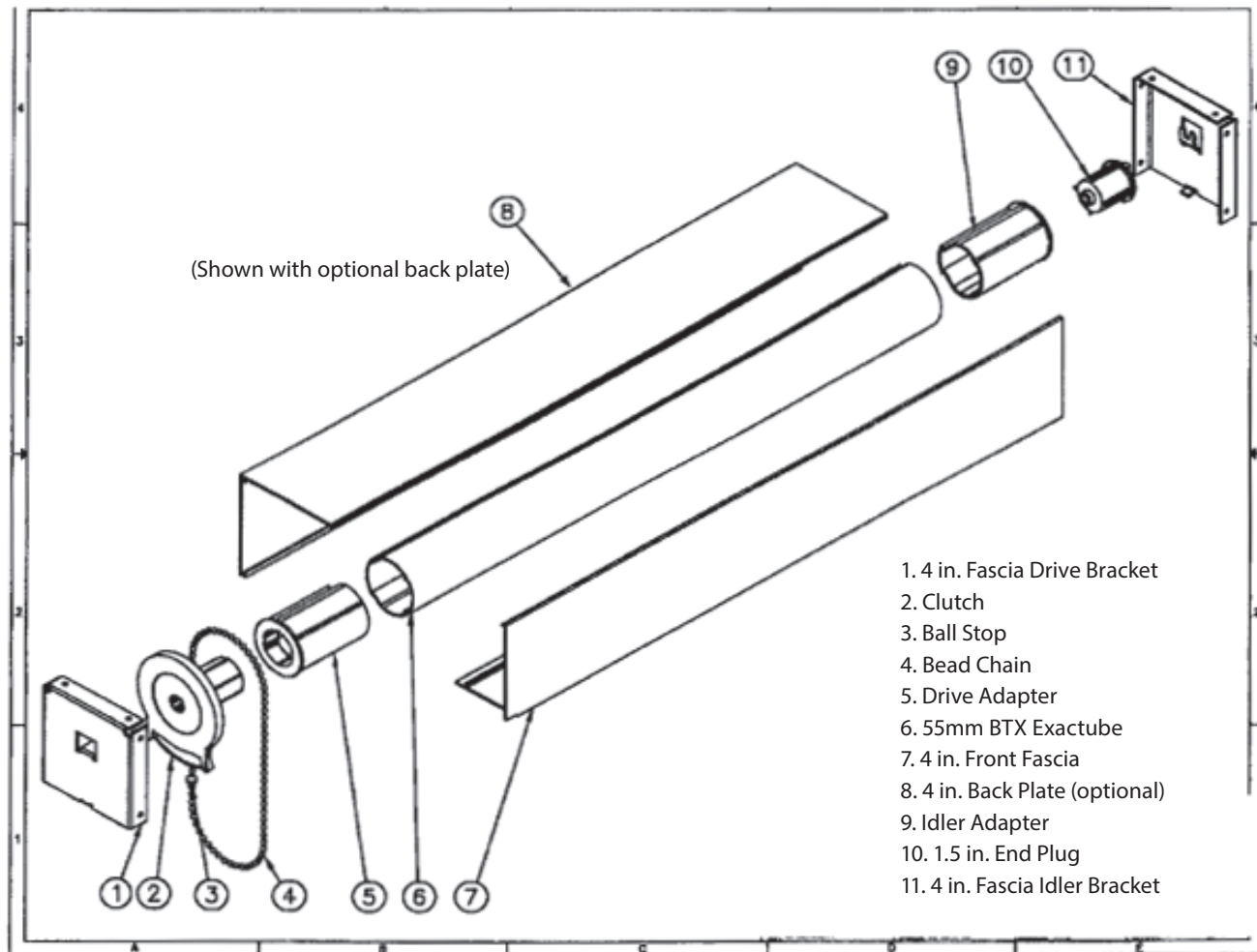
c. Position the Tension Device on the window frame or the wall so that the Tension Device and control cord do not interfere with raising or lowering the shade. **The Tension Device should be installed without stretching or pulling down on the control cord. Stretching the cord will cause excessive wear. Do not twist or cross the control cord.** If using stop balls on bead chain, position the tension device 1/4 inch higher to allow the stop ball to pass thru the tension device.

d. Holding the Tension Device upright, and in position, as shown, insert and secure the screw through the hole. **The mounting screw must be secured into a solid surface or molly.**

5. USE THE CONTROL CORD OR BEAD CHAIN TO OPERATE THE SHADE Pulling gently on one side of the control cord or bead chain raises the shade; pulling down on the other side lowers it.

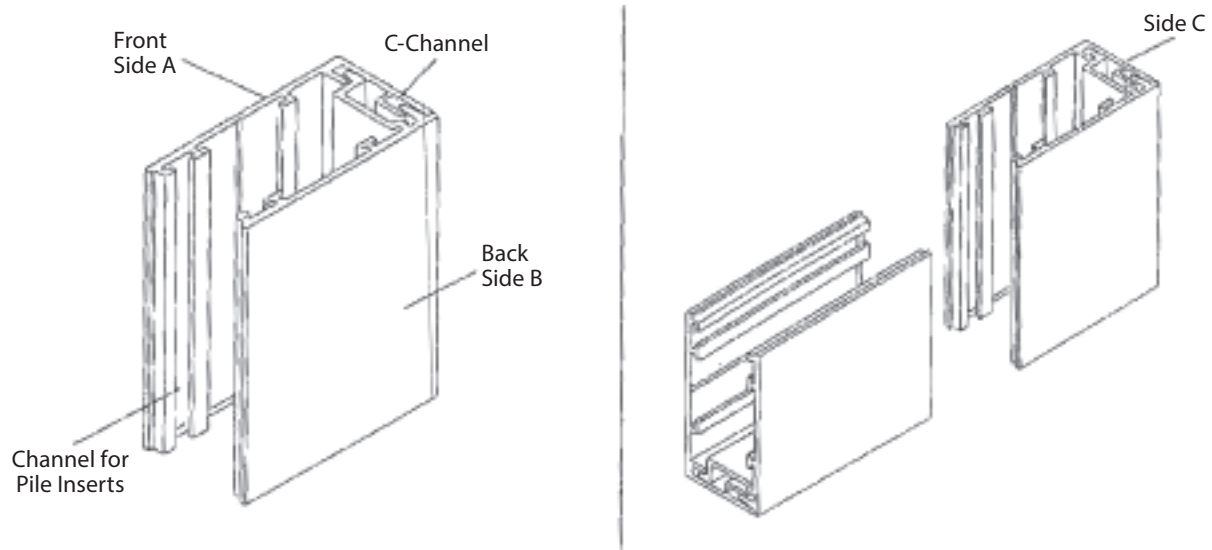
Call **1-866-BLACKOUT** and we can provide you with blackout curtains, track and hardware and roller shades to control your lighting applications.

ROLLER SHADE INSTALLATION



Call **1-866-BLACKOUT** and we can provide you with blackout curtains, track and hardware and roller shades to control your lighting applications.

SIDE AND SILL CHANNEL ROLLER SHADE INSTALLATION



1. Install the shades prior to side channel installation.

2. Move shades to the full up position.

3. Ensure channel is cut to the correct size for the height from bracket/clutch to sill.

4. Install synthetic pile inserts into channels.

Crimp channels in extrusion to secure pile, if necessary.

5. For Face Mount:

- Install side B, ensure shade will pass in front of this channel
- Lightly crimp C channel for secure fit
- Snap side A into Side B

6. For Side Mount:

- Lightly crimp C channel for secure fit of pieces
- Snap side A into side B
- Install channel through side C

7. For Sill Channel Installation:

- To mount through side C into sill:
 - Lightly crimp C channel for secure fit of pieces
 - Snap side A into side B
 - Align channel with side channel
 - Install channel through side C
- To face mount the sill channel:
 - Align side B with side B of the side channel
 - Install side B, ensure shade will pass in front of this channel
 - Lightly crimp C channel for secure fit
 - Snap side A into side B

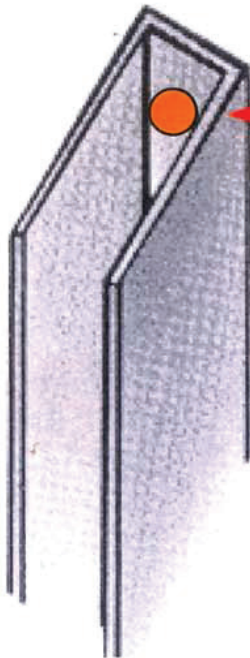
Call **1-866-BLACKOUT** and we can provide you with blackout curtains, track and hardware and roller shades to control your lighting applications.

SIDE SILL CHANNEL ROLLER SHADE INSTALLATION

Side and Bottom 2 1/2 Inch Channel "Modular" Installation

#1 Install the Light Blocking Fascia

Test Shade to confirm it is rolling correctly.
Install front Fascia. Position side channels slightly under the Fascia.



Inside Frame Mount Installation

Locate a firm mounting point

Use two or three flat head screws. They must be fully set so bottom Bar will pass.

Operate shade to confirm it is rolling smoothly.
Secure side channels to the window frame by drilling directly through the back surface.

Outside Frame Mount Installation

Operate shade to confirm it is rolling smoothly.

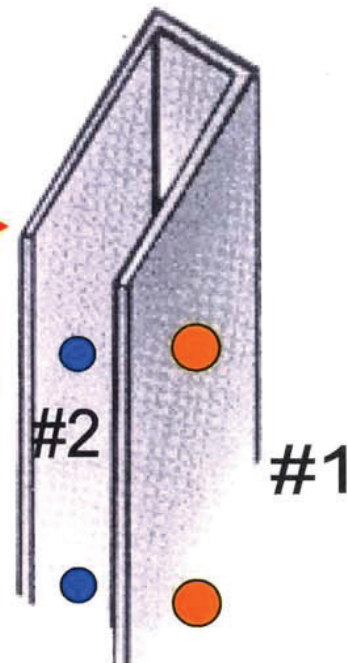
Mark position of the side channels.

Locate two firm mounting points.

Use a 1/2 inch bit too drill through the outside of the channel. #1

Use a 3/16 drill to drill through the inside channel. #2 Secure with two screws.

Seal the two 1/2 inch holes with the included plastic buttons.



Bottom Channel-Install between side channels.

Seal holes the two 1/2 inch holes with the included plastic buttons.

Fill in any gaps with matching Caulk.

The backs of the side channels can be interlock if installing between two windows. They must also be secured with screws or foam tape.

Call **1-866-BLACKOUT** and we can provide you with blackout curtains, track and hardware and roller shades to control your lighting applications.

LIGHT BLOCKING FASCIA INSTALLATION

Your Installation may require different screws to mount the brackets to the wall.

If your system is motorized disregard drawing parts #2-5 and #9

System consists of 2 End Plates - Part #1 and #11

Back Plate #8 and Front Fascia Plate #7

The inside of the Back Plate is the mounting surface for the Battery Wand - 1 set of brackets or Dual Battery Wands - 2 sets of brackets.

The Back Plate is marked where End Plate #1 and #11 will be installed - open side down.

There are four pre-drilled holes for each End Plate.

Determine if you will install the brackets to the top using the upper holes or the facing using the back holes.

You can also install inside the opening by drilling holes through the sides of the brackets. Screws must be flush and away from the shade area.

1. Assemble the End Plates #1 and #11 to the Back Plate

Secure each with two **short** self drilling screws through the holes you **WILL NOT** be using to mount the brackets to the wall. Leave screws slightly loose if any adjustments must be made. On completion of step #2 tighten.

2. Install the assembled unit from step #1 to the window frame

Use the four **long** self drilling screws through the two unused holes on each bracket. Confirm the installation is secure.

3. Install Battery Wand Clips (2 or 4)

Install through drilled holes in Back Plate. Slide the rubber bands on the Wand(s) so they align with the clips. Install the Battery Wand(s) into the mounting clips with the wire plug facing the End Plate #1. Unwind wire so it can be plugged into the motor.

4. Install Motor into Shade Roller

Align with the internal key.

5. Connect External Receiver Eye (Infra Red System only)

Connect mini plug to the matching port on the motor. Receiver Eye must pass through the shade slot and be located to receive Infra Red Signal. Use self adhesive back or screw. Do not install on front Fascia Plate (would prevent removal to access shade).

6. Connect Battery Wand

Connect at matching port on the motor. Follow motor programming instructions.

With the Fascia cover in place use matching caulk to stop any stray light leaks.

Follow additional instructions for:

Installing the shade

Programming the motor

Checking the shade is rolling correctly

Closing the Front Fascia cover

Call **1-866-BLACKOUT** and we can provide you with blackout curtains, track and hardware and roller shades to control your lighting applications.

CARE AND CLEANING INSTRUCTIONS

CLEANING:

Roller shade fabric may be cleaned by regular dusting or vacuuming with a soft brush attachment. For stained shades, sponge the fabric with a mild detergent and thoroughly rinse. Allow the shade to dry completely before raising. Do NOT completely immerse the fabric.

If commercial spot cleaners are used, they must first be tested and allowed to dry on an inconspicuous area, to ensure compatibility. Solar shade fabric may be cleaned by occasional vacuuming.

For stained shades, brush the fabric with a mild detergent and thoroughly rinse.

Allow the shade to dry completely before raising.

Do NOT completely immerse the fabric. If commercial spot cleaners or diluted bleach mixtures are used, they must first be tested and allowed to dry on an inconspicuous area, to ensure compatibility.

If deeper cleaning is desired, ultrasonic or injection/extraction cleaning may be done by a professional blind cleaner. Professional blind cleaners use a variety of methods to clean blinds and vary in their capabilities.

While blackoutcurtains.com knows that many of our window treatments can be safely cleaned using the appropriate ultrasonic or injection/extraction cleaning methods, we cannot guarantee the outcome of any cleaning services provided by an independent company. For assistance in locating a certified blind cleaner that serves your area, visit **www.blindcleaners.net**.

Do not use cleaning methods involving heat, bleach, abrasives, or solvents. Use of these methods will void the warranty.

Call **1-866-BLACKOUT** and we can provide you with blackout curtains, track and hardware and roller shades to control your lighting applications.

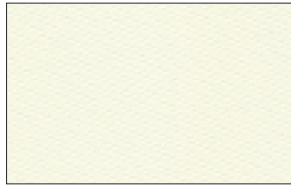
ROLLER SHADE COLORS AND SPECIFICATIONS

ROOM DARKENING RS (BLACKOUT)

Fenestration Properties



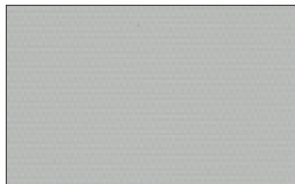
White
R6001



Creamy Beige
R6003



Beige Duplex
R6004



Smokey Duplex
R6005



Black on Black
R6013



Black Duplex
R6039

Actual color may vary

SWFcontract™ SHADING SYSTEMS

The solar optical properties are used to calculate the shading coefficient. The shading coefficient represents the percentage of solar heat gain that is transmitted to the interior through the glass and shading system. Darker colors provide maximum glare reduction and visibility.

Fire Classification: NFPA 701-2004 TM#1 (small scale), California state Fire Marshall section 13115. Registration NO. F-35803, state of California Administrative Code title 19 Section 1237.1, NFPA 701-89 Large Scale test, FTMS 191 Method 5903

Bacteria and Fungal Resistance: ASTM G 21

SPECIFICATION DATA:

Openness Factor: 0%

Composition: 3 Ply Vinyl with 1 Ply Fiberglass

Standard Widths: 72"

Standard Roll Length: 30 LY



Room Darkening RS (Blackout) 0% Openness Room Darkening RS (Blackout) - 0%

Call **1-866-BLACKOUT** and we can provide you with blackout curtains, track and hardware and roller shades to control your lighting applications.

blackout curtains . com

LIMITED WARRANTY

LIMITED WARRANTY

Blackoutcurtains.com, Inc. ("Blackoutcurtains.com") warrants (this "Limited Warranty") to the Blackoutcurtains.com Authorized Customer (the "Customer") that its products are free from defects in material and workmanship (except as provided below) for the following specified warranty periods (each, a "Warranty Period"):

- 25 years for the interior project for which it was originally purchased from the date of shipment on the mounting hardware, headbox, clutch, fascia, shade fabric, valance, curtain grommets, curtain and curtain track.
- 5 years from date of shipment on the controls, electronic accessories and motors for the above products.

This Limited Warranty extends only to the Customer, and is not transferable. This Limited Warranty is applicable to products that are repaired or replaced for the balance of the Warranty Period or for ninety (90) days from the date the product is repaired or replaced, whichever is longer. If a product breaches this Limited Warranty, the Customer may contact Blackoutcurtains.com, within a reasonable time after the Customer discovers the defect. Subject to the conditions and limitations set forth below (the "Excluded Items"), Blackoutcurtains.com will, at its discretion, either repair or replace any part of the product that proves defective by reason of improper workmanship or materials. If the Customer returns a product to Blackoutcurtains.com and Blackoutcurtains.com determines that this Limited Warranty does not apply, Blackoutcurtains.com will not return the product to the Customer unless the Customer requests it to do so and pays all expenses of shipment. If Customer does not request and pay for Blackoutcurtains.com to return the product, it will become Blackoutcurtains.com's property. Any product covered by this Limited Warranty (as determined by Blackoutcurtains.com) will, after repair or replacement, be shipped back to the Customer at Blackoutcurtains.com's expense.

BLACKOUTCURTAINS.COM'S TOTAL LIABILITY UNDER THIS OR ANY OTHER WARRANTY, EXPRESS OR IMPLIED, IS LIMITED TO REPAIR, REPLACEMENT OR REFUND. REPAIR, REPLACEMENT OR REFUND ARE THE SOLE AND EXCLUSIVE REMEDIES FOR BREACH OF WARRANTY OR ANY OTHER LEGAL THEORY. IN NO EVENT SHALL BLACKOUTCURTAINS.COM BE LIABLE FOR ANY INCIDENTAL, INDIRECT OR CONSEQUENTIAL DAMAGES, WHETHER RESULTING FROM THE PURCHASE, USE, MISUSE, INABILITY TO USE OR INABILITY TO INSTALL THE PRODUCT OR FROM DEFECTS IN THE PRODUCT.

SOME STATES DO NOT ALLOW THE EXCLUSION OR LIMITATION OF INCIDENTAL AND CONSEQUENTIAL DAMAGES, SO THE ABOVE LIMITATION OR EXCLUSION MAY NOT APPLY. THIS LIMITED WARRANTY IS THE EXCLUSIVE WARRANTY GIVEN BY BLACKOUTCURTAINS.COM FOR THE PRODUCT AND IS IN LIEU OF ALL OTHER WARRANTIES. BLACKOUTCURTAINS.COM DISCLAIMS ALL OTHER WARRANTIES, WHETHER EXPRESS, IMPLIED OR STATUTORY, INCLUDING ANY WARRANTY OF MERCHANTABILITY, ANY WARRANTY OF FITNESS FOR A PARTICULAR PURPOSE AND ANY IMPLIED WARRANTIES ARISING FROM A COURSE OF DEALING OR USAGE OF TRADE. THIS WARRANTY SUPERSEDES ALL OTHER WARRANTIES, INCLUDING ANY WARRANTIES BASED ON ORAL REPRESENTATIONS.

THIS LIMITED WARRANTY GIVES THE CUSTOMER SPECIFIC LEGAL RIGHTS, AND THE CUSTOMER MAY HAVE OTHER RIGHTS WHICH VARY FROM STATE TO STATE.

LIMITED WARRANTY

EXCLUDED ITEMS

THIS LIMITED WARRANTY DOES NOT COVER DEFECTS CAUSED BY negligence; improper maintenance; improper storage; accident; misuse; installation not in accordance with Blackoutcurtains.com's printed installation instructions; abuse; impact or other force, whether prior or subsequent to installation; operation in a manner contrary to design or use in a manner contrary to or in excess of Blackoutcurtains.com's specifications, drawings or instruction; application other than intended use; use with electrical accessories or parts, including switches, relays, or other accessory components not previously approved in writing by Blackoutcurtains.com; failure to comply with all of Blackoutcurtains.com's written instructions and specifications; use for non-interior applications or exposure to outdoor environmental conditions; improper cleaning, maintenance, care or repair; normal wear and tear; fire, lightning, tornadoes, or other acts of God; contact with liquid, water, rain, extreme humidity or heavy perspiration, sand, dirt or the like, extreme heat, or food; excessive electrical supply; abnormal mechanical or environmental conditions; unauthorized disassembly, repair or modification; service by unauthorized provider; installation of unapproved third party products; buyer's remorse. This Warranty also does not apply to any product on which the original identification information has been altered, obliterated or removed, or has been sold as second-hand. Blackoutcurtains.com does not warrant any images or artwork reproduced, printed, or placed on shade cloth by Blackoutcurtains.com or any other imaging supplier. Blackoutcurtains.com is not responsible or liable for fading, discoloration, color shifts, or any other failure or defect in such images or artwork. Blackoutcurtains.com does not warrant bead chains on any of its products. Blackoutcurtains.com does not warrant against freight damage, concealed or otherwise. The Customer must contact the delivering carrier to report freight damage within 48 hours of receipt of product. Failure to report freight damages within the carrier's guidelines may result in the Customer bearing all costs. Failure to sign the delivery receipt acknowledges approval of the product as is and nulls the Customer's claim.